

Productive All-in-one Wide Format Solution



Aficio™ MP W2400/MP W3600

Meeting Every Possible Wide Format Demand

Providing maximum efficiency with minimum effort, the Aficio™MP W2400/MP W3600 build on the proven success of Ricoh's wide format solutions. To streamline your specific wide format workflow, these compact, digital devices integrate advanced print, copy and scan functionalities and come with a range of production possibilities. The reliable Aficio™MP W2400 stands for walk-up simplicity and takes care of all your straightforward print jobs using pre-defined settings. The advanced Aficio™MP W3600 targets environments that often deal with more demanding print runs and require faster productivity. Both devices offer you the choice between a cost efficient, entry level embedded GW controller or an advanced, high performance external RATIO controller. You're bound to find a solution that perfectly fits your requirements!

- all-in-one multifunctionality: print, copy, scan & store
- extremely compact design: no need for a separate print room
- very easy to use thanks to LCD touch panel & distribution options
- superb productivity: 4.4/6.4 ppm (A1) and 2.4/3.4 ppm (A0)
- variety of print controllers & unique finishing capabilities



Professionalism and High Performance in One Unit

The Aficio™MP W2400/MP W3600 take professional care of your mission critical documents, uniting all proven technology and capabilities of Ricoh's multifunctional products into a single wide format device. These feature packed machines offer high speed, 600 dpi printing, copying and scanning, and a range of distribution possibilities.

Multi Purpose in Every Sense

- save office space and virtually eliminate the need for costly outsourcing or additional expensive devices: print, copy, scan and store in one remarkably compact device
- process a variety of paper sizes from A4 up to A0: choose between the one or two roll configuration or opt for the additional paper cassette
- easily handle less common paper types via the optional 1-sheet bypass tray
- speed up your workflow and save time by handling up to three different paper sizes at the same time
- excellent flexibility: upgradeable with a professional fan folder and a choice of two specific controllers

Maximise your Productivity

When the pressure is on, you cannot afford to waste time. The MP W2400/MP W3600 quickly respond to urgent demands with less than 2 minutes warm up time and a first output speed of only 21 seconds (A1). Their high speed engine produces 4.8 linear metres per minute, equivalent to 4.4 copies (A1) for the MP W2400 and even 6.4 copies (A1) for the MP W3600. These wide format production partners give you the reserves to meet your tightest deadlines.

Customised to your Demands

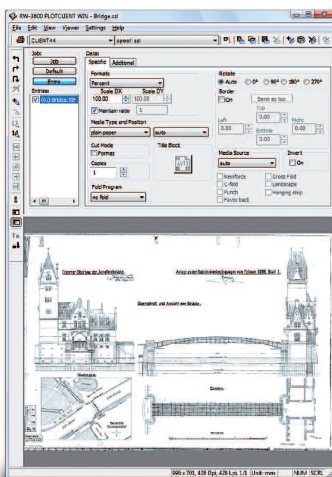
To suit your precise needs, you can choose between 2 controller possibilities. The cost efficient embedded GW controller is targeted at general office environments. To enhance productivity, it connects the mainframe directly to the network and bundles the most common and desired functions. Extremely simple to use, it offers CAD users the possibility to submit their print jobs in the same way as printing to regular office printers.

For more demanding users, the advanced, external RATIO controller further speeds up the production process thanks to its superior processing power, and uses a separate PC to rip the files. It offers direct printing of CAD files as well as easy management of your print jobs and queues, and handles a larger variety of file formats. And with the current fast moving PC standards, the system can be upgraded simply by installing the latest PC.

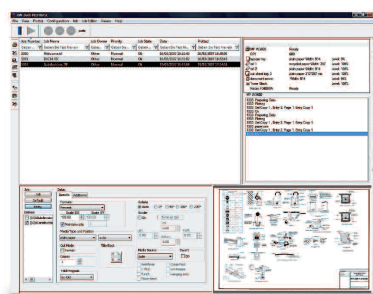
Efficient Distribution

The Aficio™MP W2400/MP W3600 turn production volume image capture, storage and distribution into a time and cost efficient process. For easy retrieval, paper documents can quickly be digitised and stored on the devices' Hard Disk Drive. What's more, your entire office can instantly share fully editable files thanks to a range of handy distribution tools:

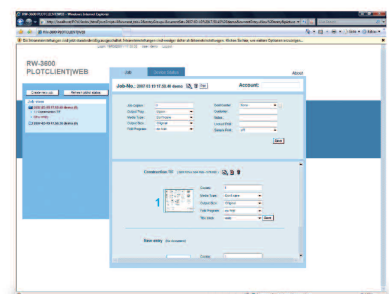
- easily and securely send scanned documents to any company e-mail address via LDAP (Scan to e-mail)
- omit excessive network traffic and send scanned files directly to URL (Scan to URL)
- transmit digitised documents immediately to a dedicated network folder (Scan to folder)



Using RW-3600 PLOTCLIENT/WIN you can change the print settings of supported file formats without the need to launch the application software with which the file was made.



The RW-3600 PLOTBASE server software maximises your efficiency by offering advanced input and output management as well as accurate cost control.



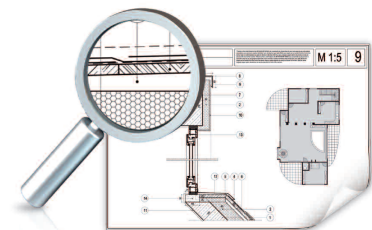
The RW-3600 PLOTCLIENT/WEB uses a web server embedded within the print engine to provide web based access to print facilities through a common web browser.

Mastering your Wide Format Workflow

Your productivity is based on an effortless workflow. That's why you need a completely integrated solution that offers user friendly operation, fast, high quality copy output and state-of-the-art printing. Add excellent network integration to the package, and you have the MP W2400/MP W3600. Your preferred centre for wide format productivity!

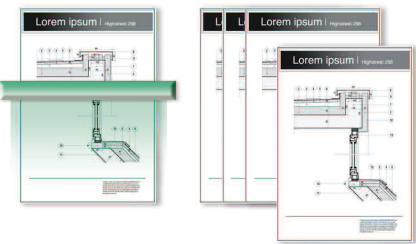
Efficient & Easy to Use

The Aficio™MP W2400/MP W3600 offer outstanding ease of use and straightforward accessibility thanks to their intuitive LCD touch panel. As the simplified display shows only your most frequently used functions, even occasional users won't waste valuable time finding the right settings. In case of irregularities, animated user guidance helps you find a quick and effective solution.



Benchmark Image Quality

Project a professional image and reproduce your posters, blueprints, maps, construction drawings or other large format documents at the highest possible quality standard. The MP W2400/MP W3600 create consistently impeccable output with edge to edge accuracy at a sharp, 600 dpi resolution and with up to 256 greyscales. Solid fills are blacker, lines are finer and crisper, halftones and shading are optimised.



Advanced Digital Technology

Prevent fragile, old and irreplaceable originals from being damaged using the 'scan once, print many' technology. Scanned only once, your documents are stored into memory and reproduced from there. To easily handle large drawings, the MP W2400/MP W3600 let you resize your documents: an A0 can be scaled to a compact A4 or vice versa in 0.1% steps.

The image on these pages is not a real photograph and slight differences in detail might appear.



Walk up Convenience

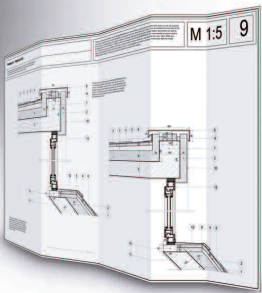
Thanks to their small footprint, the MP W2400/MP W3600 can conveniently be placed close to your work space so you can produce check plots, scans and even complex distribution sets directly from your desk. While your output can be handled from the front of the device, large or curled originals can easily be stacked at the back. With the handy originals hanger option, documents can also be placed at the front of the machine.

Safeguard Access & Information

To optimally handle sensitive information and protect your data against possible security threats, the Aficio™MP W2400/MP W3600 come equipped with potent security measures. These include various types of authentication, data encryption and IP filtering.

Versatile Networking

Ready for complete integration into your business workflow, the MP W2400/MP W3600 boast fast and easy network connectivity for virtually any type of environment. You can print from AutoCAD®, Windows®, Bentley® and other applications commonly used in technical environments. Also web printing is possible via Web Client for printing via Intranet or Internet.



Professional Finishing

Eliminate time consuming manual work and save on your budget by using the unique fan folder unit. This finisher vertically folds the paper into a 'fan' and creates impeccably finished output, ready for distribution.

Thinking Green

Ricoh continues to prove its commitment to a healthier and cleaner work environment. With their small footprint, minimal ozone, noise and heat emission levels, the all-in-one Aficio™MP W2400/MP W3600 can easily be placed in your drawing office or virtually any other working area.





Aficio™ MP W2400/MP W3600

Specifications



COPIER

Copying process:	Electro photographic printing
Copy speed:	MP W2400: 2.4/4.4 copies per minute (A0/A1) MP W3600: 3.4/6.4 copies per minute (A0/A1)
Resolution:	600 dpi
Multiple copy:	Up to 999 (ten key input)
Warm up time:	Less than 2 minutes
First output speed:	Less than 21 seconds (A1)
Reduction/enlargement:	4R/4E
Zoom:	25 - 400% (in 0.1% steps)
Memory:	1,024 MB + 80 GB Hard Disk Drive
Paper input capacity:	1-sheet bypass tray 1 Roll Feeder (option) 2 Roll Feeder (option) 250-sheet paper cassette (option)
Paper output capacity:	Top: 50 sheets A1 (plain paper) Bottom: 40 sheets A0 (plain paper)
Paper size:	Minimum: 210 x 210 mm Maximum: 914 x 15,000 mm
Paper weight:	21 - 157 g/m ²
Dimensions (W x D x H):	1,080 x 637 x 580 mm
Weight:	Less than 107 kg
Power source:	220 - 240 V, 50/60 Hz
Power consumption:	Less than 1,440 W

PRINTER/SCANNER Type W3600 (option)



Printer

Controller type:	Embedded
Print speed:	MP W2400: 2.4/4.4 prints per minute (A0/A1) MP W3600: 3.4/6.4 prints per minute (A0/A1)
Printer resolution:	Maximum: 600 dpi
Print size:	Minimum: 210 x 257 mm Maximum: 914 x 15,000 mm
Network protocol:	TCP/IP, IPX/SPX, AppleTalk
Supported file formats:	HPGL, HPGL2 (HPRTL), TIFF (CAL), Adobe® PostScript® 3™, RPCS™
Supported environments:	Windows® 95/98/Me/2000/XP/Server 2003 Macintosh 8.6 or later (OS X Classic) Macintosh v10.1 or later (native mode)
Interface:	Standard: Ethernet 10 base-T/100 base-TX USB 2.0 Option: Wireless LAN (IEEE 802.11b) Gigabit Ethernet USB Host I/F
Recommended PC:	Please contact your supplier for the latest recommended list.



Scanner

Scan speed:	Maximum 80 mm per second
Resolution:	600 dpi (TWAIN: 150 - 1,200 dpi)
Original size:	Maximum 914 x 15,000 mm
Output formats:	PDF/TIFF
Bundled drivers:	Network TWAIN
Scan to e-mail:	SMTP, TCP/IP
Destination addresses:	Maximum 100 per job

Stored destination

addresses:	Maximum 150
Address book:	Via LDAP or locally on Hard Disk Drive
Scan to folder:	Via SMB, FTP or NCP protocol
Destination:	Maximum 32 folders per job
Scan to PDF:	Standard



PRINTER RW-3600 (option)

Controller type:	External (RATIO controller – Server PC type soft RIP controller)
Print speed:	MP W2400: 2.4/4.4 prints per minute (A0/A1) MP W3600: 3.4/6.4 prints per minute (A0/A1)
Print resolution:	600 dpi
Print size:	Minimum: 210 x 210 mm Maximum: 914 x 15,000 mm
Network protocol:	TCP/IP, IPX/SPX, lpr/lpq, HTML, SMB (as of Windows® 2000)
Supported file formats:	Standard: HPGL, HPGL2, HP/RTL, TIFF, Calcomp 906/907, WMF, BMP, CAL (1 & 2), T6X, CIT, PCX, RCL Option: Adobe® PostScript® 3™, CGM, DWG, DXF, DWF, VIC
Supported environments:	Windows® 2000/XP/Server 2003 Windows® Vista™ UNIX Sun® Solaris 2.6/7/8 HP-UX 10.x/11.x SCO OpenServer 5.x (up to 5.0.6) Redhat® Linux 6.x/7.1 Macintosh 8.6 or later (OS X Classic) Macintosh v10.1 or later (native mode)
Recommended PC:	Please contact your supplier for the latest recommended list.



SCANNER RW-3600 (option for Printer RW-3600)

Scan speed:	Maximum 6 originals per minute (A1)
Resolution:	150 - 1,200 dpi
Original size:	Maximum: 914 x 15,000 mm
Output formats:	Standard: HP/RTL, TIFF, BMP, CALS (1 & 2), T6X, PCX, RCL Option: PDF, DWG, DWF



SOFTWARE/DRIVERS

RW-3600 PLOTBASE, RW-3600 PLOTCLIENT/WIN, RW-3600 WINPRINT, Bentley®, RW-3600 PLOTCLIENT HDI/ADI, RW-3600 PLOTCLIENT/WEB, RW-3600 PLOTCLIENT/MAC, RW-3600 SCANTOOL

OTHER OPTIONS

1 Roll Feeder, 2 Roll Feeder, 250-sheet paper cassette (up to A3), Table, Originals hanger, Roll holder, Rear stacker, Fan folder unit, File Format Converter, Data Overwrite Security Unit

For availability of models, optional apparatus and software, please consult your local Ricoh supplier.



ISO9001: 2000 certified
ISO14001 certified

Ricoh has designed these products to meet EC ENERGY STAR guidelines for energy efficiency.

Ricoh believes in conserving the earth's precious natural resources. This brochure is printed on environmentally friendly paper: 50% recycled fibres, 50% chlorine free bleached pulp.

All brand and/or product names are trademarks of their respective owners.

Specifications and external appearance are subject to change without notice. The colour of the actual product may vary from the colour shown in the brochure.

Copyright © 2007
Ricoh Europe (Netherlands) B.V.
All rights reserved. This brochure, its contents and/or layout may not be modified and/or adapted, copied in part or in whole and/or incorporated into other works without the prior written permission of Ricoh Europe (Netherlands) B.V.

RICOH

For more information, please contact:

RICOH EUROPE (NETHERLANDS) B.V.
P.O. Box 114, 1180 AC Amstelveen,
The Netherlands
Phone: +31 (0)20 54 74 111
Fax: +31 (0)20 54 74 222
www.ricoh-europe.com