



& wide IDEA tiling
 costview & DESIGN SOLUTIONS USER Cut Nesting FINISHING business
 magenta Fast SOFTWARE Cut &
 CALDERA
 COLOR POWERFUL FORMAT PRODUCTIVITY
 FLEXIBLE cyan GRAND
 AWARDS Sales calibration new RIP WORKFLOW COLOR innovation
 PROFILES EXPERTISE CALDERA
 MEDIA INCLUSIVITY PRINT-TO-CUT APPE
 CALDERA POWER DIGITAL SIGNAGE
 PRINT GRAND yellow DRIVING MODERNITY Print cut
 SALES CREATION FLOW+ Variable Display additional options
 & COMMUNICATION &
 interface RIP IMAGING black
 CUT extranet WIDE



CALDERA's production workflows are dedicated to wide and extra-wide format Print and Print-to-Cut applications



CALDERA



CALDERA is a software company with more than 20 years of experience in developing, marketing and supporting high-quality technological software for wide-format imaging with a commitment to increasing productivity, cost-efficiency and colour output. **CALDERA's** suite of award-winning, production-orientated print and print-to-cut workflow programs offers colour management, imaging and driving solutions for large and grand-format peripherals.

WHAT WE DO:

- + Print & Print-To-Cut Workflow for LFP
- + True Adobe PDF Workflow
- + Colour Management
- + Automated Workflow
- + Cost Management
- + LFP Business Management
- + Digital Signage



AWARD WINNING RIP SOFTWARE FOR PRINT-TO-CUT WORKFLOW



- 2011 : Outstanding service award
- 2010 : Best product of the year
- 2009 : Best product of the year
- 2008 : Best product of the year
- 2006 : Software of the year
- 2002 : Software of the year



- 2012 : RIP of the year
- 2011 : RIP of the year
- 2010 : Best overall product
- 2010 : Best color management software
- 2010 : Best management software
- 2009 : Best color management software
- 2009 : Best overall product
- 2009 : RIP of the year
- 2008 : Best overall product
- 2008 : RIP of the year





- 2007 : RIP of the year



- 2008 : FESPA Innovation award



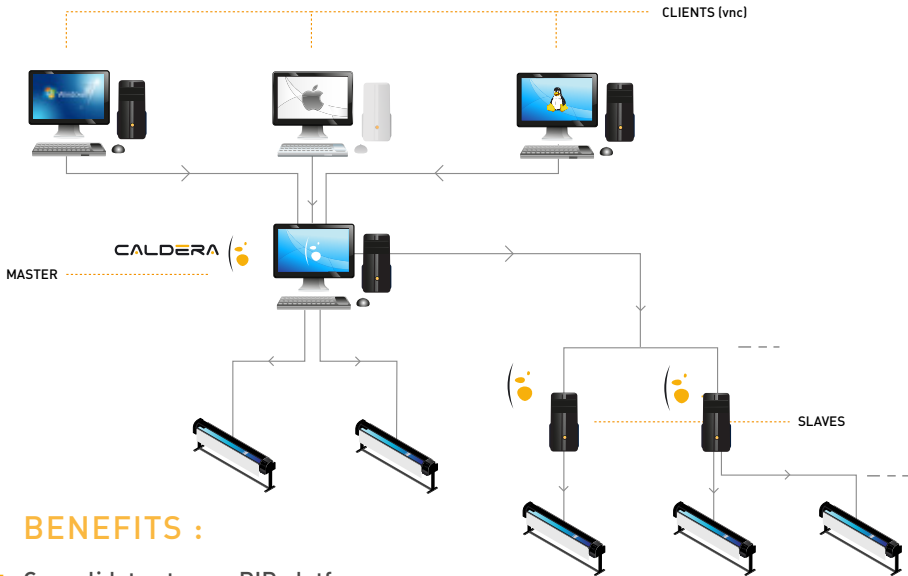
- 2011 : Best innovative green product (VISCOM France)
- 2009 : Innovation award (VISCOM Düsseldorf)

Linux  and Mac  are the operating systems chosen by Caldera for optimal resource management and quality workflow.

ADVANTAGES:

- + **Increased resource management:** The processor and memory are optimally used for applications and not consumed by the system. With more resources allocated to them, the RIPing and PRINTing of files are logically faster.
- + **Multi-Task environment:** Users can print and RIP while preparing, layouting, nesting, cutting, colour matching... other jobs to be sent to printers.
- + **User-friendly GUI:** Spend less time looking for the right window and functions. Caldera's interface has been carefully designed for optimal ergonomoy. Intuitively drag and drop your jobs on the targeted printer to get the job done.
- + **Master-Slave architecture:** Spend less time training on or manipulating different RIP's on different machines. A single master RIP computer (Mac or PC) can manage unlimited RIP/Printing slave computer's for scalable distributed computing over the network. One Caldera RIP will drive all the printers and cutters of your network.

CLIENT/SERVER ARCHITECTURE



BENEFITS :

- + Consolidates to one RIP platform
- + Reduces training time and confusion
- + Increases throughput and colour homogeneity
- + Purchase one update for all machines
- + Cost efficient

CALDERA'S KEY FEATURES

1. MARKET LEADING COLOR LIBRARIES

Caldera has integrated the Pantone, RAL, PPG, NCS and HKS colour libraries

- + Precise colour matching (conversion of Spot Colours to CMYK values)
- + Consistency over media, jobs and machines

2. ADVANCED TILING MODULE

Caldera Tiling+ has advanced tiling features

- + Fully configurable grommets (size, shape, colour...)
- + Complete management of the covering, overlap, gap and white
- + Printing of the name of each tile to facilitate identification and placing
- + Featuring the generation of a PDF guide for mounting
- + Less time spent calculating tile and grommet positioning

3. RIP AND PRINT WHILE YOU RIP

RIP a second file while RIPing and PRINTing another job at the same time

- + Maximizes output
- + Reduces downtime

4. MULTITASK ENVIRONMENT

PRINT and RIP while preparing, layouting, nesting, colour matching... other jobs to be sent on printers

- + Stable working environment
- + Increases productivity
- + Simplifies workflow activity

CALDERA'S KEY FEATURES

SUPER SPOOLER .5

Enables the visualization of all jobs on all printers (directly or indirectly connected to RIP servers) from one central spooler (Master-Slave configuration only)

Better control over PRINT workflow +

Increases productivity +

ENABLED HOTFOLDERS AND WORKFLOW .6

Automatic file capture in dedicated folders for workflow printing tasks

Automation of PRINT workflow +

Improves productivity +

HIGH QUALITY PREVIEW DISPLAY .7

Sophisticated preview of all jobs before printing

Precise viewing of jobs +

Possibility to crop raster and vector documents +

SPOT COLOUR MATCHING .8

Automatic detection of spot colours with full rendering simulation based on media profiles

Precise colour output +

Unifies colours over different jobs, media and printers +

Create your own color library +

Colour + Replacement rules +

Colorbooks +

VERSION 9



Caldera V9 continues to offer the most comprehensive, feature-heavy option on the print software market today:

- + Correct colours within the GUI
- + Re-Open jobs during any stage of workflow
- + Easy correction of linearization curves
- + Save current Print configurations
- + Use Colour Books to visually compare colour output
- + Automatic Print gutters to avoid nozzle clogging
- + Monitor offline printers with LiveSpooler™ technology
- + RIP faster/better with Adobe PDF Print Engine 2.5
- + Print better colours with itPrism V2 (EasyMedia option)
- + Save ink with new InkPerformer™ option
- + Relinearization function

NEW CALDERA V9 SETS NEW STANDARDS FOR COLOUR AND TRANSPARENCY CONTROL

The new edition of Caldera's pioneering RIP solution brings with it a new generation of upgrades which understand the pressures of modern wide-format production properly and gives print houses the tools to streamline production and improve quality.

Enhanced colour options, improved transparency handling and faster previewing join with practical additions to provide Caldera's world-wide user base with the broadest functionality available in this market.





APPE

ADOBE PDF PRINT ENGINE



True Adobe PDF workflow:

- + Increases RIP and print speeds
- + Ensures output consistency
- + Reduces unwanted surprises
- + Streamlines production of complex graphics (transparencies, shadows...)
- + Improves matching with Acrobat
- + Better font support

CALDERA RIP SOLUTIONS (V9) NOW INCLUDE ADOBE PDF PRINT ENGINE 2.5

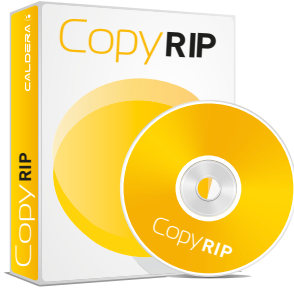
The Adobe® PDF Print Engine enables integrated, end-to-end PDF workflows for printing graphically rich content, including variable content for personalized publishing.

The Caldera print solutions powered by Adobe PDF Print Engine component allow PDF files to be rendered natively, without conversion to postscript, helping to ensure that complex designs and effects, even variable print elements with transparency, are efficiently and reliably reproduced through the PDF standard.

With the latest version of the Adobe PDF Print Engine, Caldera simplifies upstream PDF workflows and unifies prepress production. It empowers designers to create leading-edge content with confidence, knowing that it will be reproduced as expected by print producers.

Memory management, font support and Xobjects are significantly better supported by the new APPE 2.5 integration, which also provides smaller fixes, such as more consistent direct colour substitution and the ability to replace spot colours in RGB mode. The primary advantage for Caldera V9 users, who possess the APPE option, is the improved RIPping speeds, especially for files with transparent elements, which will see 20% of the RIP time shaved off on average. In tandem, the new Global Rasterisation option allows for the preview of more complex documents, such as those with transparency or overprint information.

CopyRIP



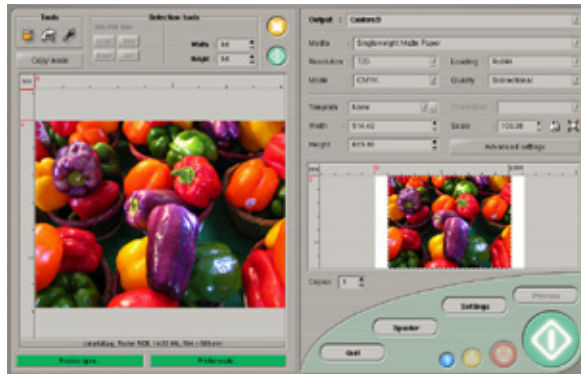
FOR LOW TO MID PRODUCTION VOLUME WITH MINIMAL DEVICES

- + Straightforward GUI
- + Stop, release, reorder and change a job at any time
- + Automated Nesting
- + Step & Repeat
- + Media optimization enabled
- + Print with remote web-browser
- + High quality ICC compliant output

CopyRIP is the easy-to-use, yet powerful desktop RIP solution for small-volume wide-format print providers running a small print operation.

With intuitive features such as Step & Repeat and Nest-O-Matik™ included as standard, **CopyRIP** optimises your media usage on the fly, while SuperSpooler gives you ultimate control over your print jobs. You can stop, release, reorder or change a job at any time, even if you're not at your desk, using a remote web browser.

Caldera's straightforward interface combined with the ability to edit and enhance documents in the program, will save you time and increase productivity. Whether you're processing PostScript or raster files or managing end-to-end PDF workflows with the integrated Adobe PDF Print Engine, Caldera **CopyRIP** delivers high-quality ICC-compliant output every time.



VisualRIP⁺

FOR MID TO HIGH PRODUCTION VOLUMES
WITH MULTIPLE DEVICES

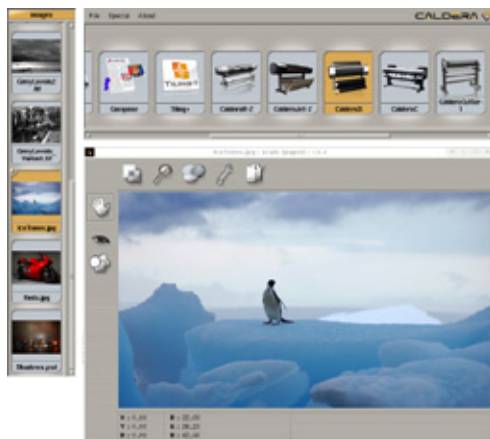


- + Sophisticated features
- + Intuitive GUI
- + Advanced tiling module
- + Fully modular and scalable

VisualRIP+ is the comprehensive workflow solution for large-format print and print-to-cut production for use with multiple devices.

Integrated features including Tiling+ and Nest-O-Matik™ help you to make the best use of your media, and sophisticated Step & Repeat allows you to RIP an image once for multiple print jobs. Hotfolders and drag-and-drop functionality simplify your workflow while SuperSpooler effortlessly manages multiple printers simultaneously, allowing you to switch jobs between queues with ease.

With a powerful ICC colour calibration engine and spot colour matching incorporated, plus a host of optional add-on modules to increase functionality, Caldera **VisualRIP+** is the trusted RIP solution that will not only help to grow your business but will also grow with it.



GrandRIP⁺



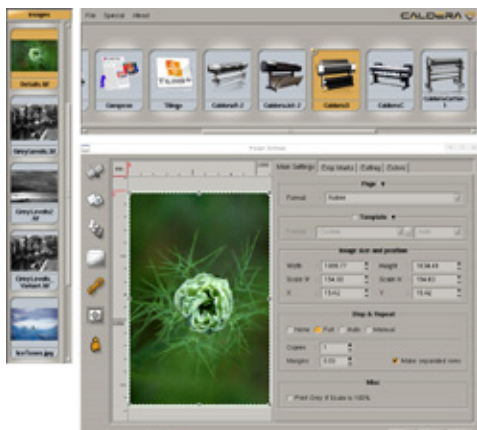
FOR MID TO HIGH PRODUCTION VOLUMES WITH MULTIPLE DEVICES INCLUDING FLATBEDS AND EXTRA-LARGE FORMATS

- + Powerful production workflow
- + Grand format capabilities
- + Advanced overlap and tiling management
- + Flatbed Print-to-cut control

GrandRIP+ is the ultimate production workflow solution for large-scale wide- and superwide format print and print-to-cut applications.

Built for speed, reliability and flexibility, **GrandRIP+** represents the cutting edge of wide-format production software, supporting all popular large-format printer manufacturers. Incorporating the key features of all Caldera's RIP packages, including Nest-O-Matik™, Step & Repeat, SuperSpooler and Tiling+, **GrandRIP+** also includes SignMark to add grommets, stitch or fold marks on your tiled output and make finishing a breeze.

GrandRIP+ keeps your business adaptable with the ability to add extra modules, including cutting solutions and cost management, as you need them. All these powerful and indispensable tools are controlled from within one simple, intuitive user interface, allowing you to manage your production quickly, easily and seamlessly from start to finish.

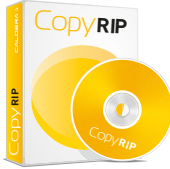


PRODUCT COMPARISON

COPYRIP

VISUALRIP+

GRANDRIP+



Printer Set-up	Single or minimal devices	Multiple devices	Multiple devices
Cut workflow capability	Not available	Roll Cutter & FlatBed	Roll Cutter & FlatBed
Print/Production Volume	Low to Mid	Mid to High	Mid to High
Media Formats	Roll to Roll	Roll to Roll	Roll to Roll & Flatbed
Ink Types	Aqueous, Eco-Solvent, Solvent	Aqueous, Eco-Solvent, Solvent, Latex, UV	Aqueous, Eco-Solvent, Solvent, Latex, UV
Applications	Print Production	Print Production, Textile	Print Production, Textile, Industrial rigid surfaces

FEATURES	COPYRIP	VISUALRIP+	GRANDRIP+
Adobe PDF Print Engine	✓	✓	✓
Multitask Environment	✓	✓	✓
RIP & Print while you Print	✓	✓	✓
HQ Preview	✓	✓	✓
ICC Support	✓	✓	✓
Step & Repeat	✓	✓	✓
Spot Colour matching	✓	✓	✓
White Ink	✓	✓	✓
Task Automation		✓	✓
Hot Folders		✓	✓
Layout and Compose		✓	✓
Tiling+		✓	✓
SignMark		✓	✓
Nest-O-Matik	✓	✓	✓

OPTIONS	COPYRIP	VISUALRIP+	GRANDRIP+
AddDriver	✓	✓	✓
CostProof	✓	✓	✓
CostView	✓	✓	✓
EasyMedia	✓	✓	✓
VisualCut		✓	✓
GrandCut		✓	✓
NestOba	✓	✓	✓
VisualUser	✓	✓	✓
InkPerformer		✓	✓
EasyTextile		✓	✓

CUT Solutions



For total print-to-cut workflow control, Caldera's cut solution modules optimize and manage your cutting needs at every step of the process, from document set-up to the final cut. Driving the industry's best roll and flatbed cutters, **VisualCUT** and **GrandCUT** improve accuracy by extracting the contours included in a document within your print-to-cut workflow, while **NestOBA** increases efficiency by arranging images in the most cost and waste-efficient way for your FOTObA cutter.

▶ ROLL TO ROLL CUTTING

Visual CUT



For Graphtec, Summa, Mimaki, Mutoh and Roland... roll cutters. **VisualCUT** will automatically set up cut marks for the specific device it is driving and guide the machine along the documents embedded contours.

VisualCUT makes even complex cutting easy with the software's ability to manage multiple contours in one file.

▶ FLATBED CUTTING

Grand CUT



For large-format flatbed cutters **GrandCUT** generates a machine-specific file for each individual job to ensure the most precise cut.

Supporting Zünd Cut Center, Zünd Touch & Cut, Aristo, Multicam, Grafitroniks, OptiSCOUT, Esko, iCut and Duncan controllers... your print-to-cut workflow has never been simpler than with **GrandCUT**.

▶ FOTObA CUTTING

Nest OBA



Specifically developed for FOTObA cutting machines, **NestOBA** is the evolution of Caldera's powerful Nest-O-Matik™ tool, designed to save time and resources when cutting.

- + Automatically positions your images on the media in the most efficient way for FOTObA devices
- + Minimizes the cutting time
- + Maximizes profit margins in one simple step

CostVIEW



THE WORLD'S FIRST CARBON FOOTPRINT CALCULATOR DEDICATED TO WIDE-FORMAT PRINTING

- + Measures your production costs
- + Measures your environmental impact

Offering a truly comprehensive overview of all the costs associated with each and every print, **CostVIEW** is an essential tool for today's increasingly competitive market. Within an easy-to-use browser interface, production managers can view jobs in the spooler in real time, monitor ink and media usage and costs, plus add additional costs automatically. **CostVIEW** also analyzes the environmental impact of each element of the job, from CO₂ output to ink and electricity consumption.

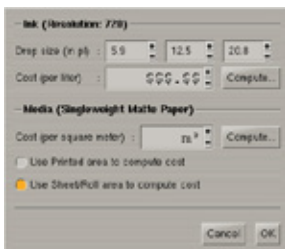
Media consumption :
1.86 m²

Ink consumption:
26.42 mL



CostPROOF

INK & MEDIA CALCULATION



CostPROOF estimates your printing costs by calculating the ink and media consumption per PRINT job. Simply enter your ink and media purchasing costs into the system and **CostPROOF** will accurately determine the quantities of each needed for printing the job. The costs of the job can then be displayed at RIP time **before** you launch the printing process and as a log information.

Easy MEDIA



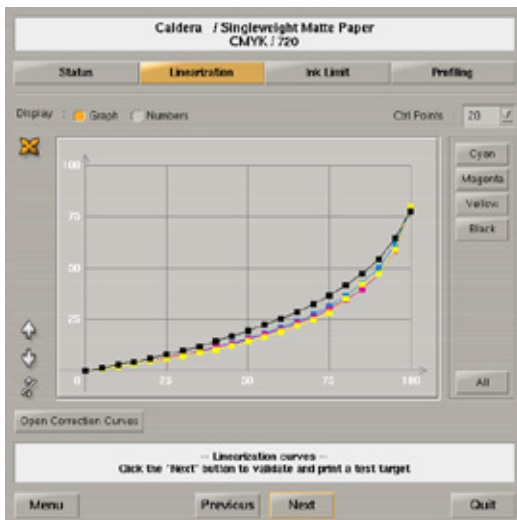
An integrated colour calibration and ICC profiling solution for:

- + Colour management
- + Colour calibration
- + Profile creation

EasyMEDIA allows you to create ICC profiles for printers, guaranteeing accurate and consistent colour reproduction across all your processes.

Incorporating i1Prism V2, the new X-Rite profile building engine, **EasyMEDIA** benefits from the latest state-of-the-art algorithms for enhanced colour separation and colour management within your Caldera workflow.

It includes a library of several thousand ICC profiles for all major manufacturers, but creating new profiles to match your individual needs is easy. For precise colour management, embedded profiles are detected, extracted and applied automatically, and parameters are determined according to the image, whether vector, greyscale, RGB or CMYK. Spot colours are supported and named colours are identified with full simulation of printed colours based on the output profiles.



MANUAL SPECTROPHOTOMETERS



XRite i1Pro2

The i1Pro is a handheld, easy-to-use colour measurement device that provides accurate readings about the current conditions of the press.

Colorpad



Because of the Caldera Colorpad's portability and "computer independence", this professional spectrophotometer device can be placed and used directly on the printer. The integrated touch display simplifies the interaction with the device and gives immediate feedback of the measurement results. The ColorPad is the ideal tool for measuring a wide variety of media used in professional digital printing (including large and wide format) for use away from the desk and at a good price.

AUTOMATED SPECTROPHOTOMETERS



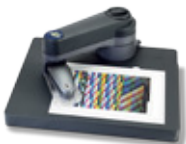
Caldera TotalColor is the ultimate and most complete solution for color management and profiling.

TotalColor's automatized table measures media both opaque and transparent with a changeable measuring aperture of 2 and 6 mm (8mm fixed aperture for textiles) for high and low resolution prints, with plain or structured face. The TotalColor table has the ability to read materials up to 20mm thick.



Caldera EasyColor is an automated solution for linearization and profiling of photographic and wide format output devices for flexible reflective and transparent materials with a thickness up to 0,7 mm.

Easy to use, versatile and compact, Caldera EasyColor is the easiest way to achieve top quality prints from digital output devices.



XRite i1iO

The i1iO is a robotic, automatic chart reading system that is designed to work with i1Pro devices. It's ideal for photographers, designers, and printers who want to speed up and automate the measurement process. Simply plug in the device, align the test patch, and the scanning table does all the work—no more manual strip reading!



More details on : www.caldera.com

INK PERFORMER™



Innovative ink saving module:

- + Monitor and optimize ink consumption
- + Improve environmental impact
- + Rapid return on Investment
- + Multiple ink saving levels

InkPerformer™ promises users the power to monitor and optimize their ink consumption, giving commercial printers a significant environmental and economical advantage over their competitors.

Caldera **InkPerformer™** harnesses Alwan's award-winning profiling technology within the context of the adaptable and powerful Caldera RIP engine to provide an average 20 percent and up to 35 percent reduction in ink consumption across all types of wide-format production. At a time when raw materials costs, and therefore ink prices, are rising dramatically, this significant savings allows all types of wide-format digital print houses to decrease their expenditure significantly, typically achieving ROI within weeks.

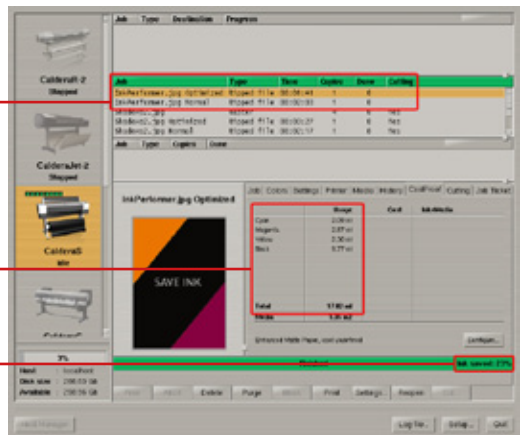
Original Job :

22.19 mL

Optimized Job :

17.02 mL

Ink saved : 23 %



EasyTEXTILE™

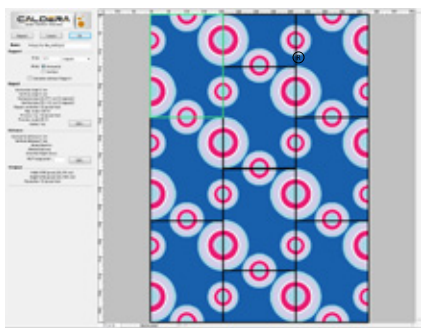


EasyTextile™ is a Caldera option giving users the possibility to enter the Textile printing market. This solution includes two main features that enable the management of:

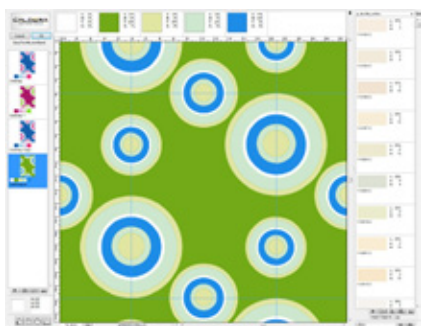
- + Pattern repetition with "Caldera Step & Repeat"
- + Colour management specific to Textile printing

These two features are part of the Caldera solutions portfolio working as plug-ins for Adobe Photoshop®. The **EasyTextile™** plug-ins are modules which prepare jobs for the Caldera RIP and must be installed in addition to the basic Adobe Photoshop® software package.*

▶ **EasyTextile™ "Step & Repeat"** controls the repetition of an image by applying a shift to them. In textile printing, pattern repetition (side by side) is not often used because it will cause numerous repetitions and an ungraceful design. This module automatizes the pattern layout by automatically optimizing positioning (pivoting, inverting...). The module then exports the information to the Caldera RIP.



▶ **EasyTextile™ "Colorations"** manages Colorways; the colour schemes in which a pattern or style (of fabric, apparel, furnishings, wallpaper, etc.) is available. This plug-in gives users the ability to create for one image, multiple colorways, which enables many colour possibilities for one pattern. Printers can use this option for easily creating swatch books or printed colour samples.



*Adobe Photoshop® has to be purchased separately.

flow+

WIDE FORMAT BUSINESS WORKFLOW



FEATURES:

- + Live job tracking
- + Two-way interaction with the RIP
- + Visualization of production stages
- + Stock Management
- + Sales management (quotes, invoices...)
- + File management
- + Activity reports
- + Flexibility

For the ultimate in wide-format printing workflow control, **Flow+** is the first software solution to integrate fully with your Caldera RIP for the management of your entire print process from quotation to invoice.

Incorporating a management information system (MIS), enterprise resource planning (ERP), customer relationship management (CRM) and a document management system (DMS), **Flow+** presents all your data in an intuitive user interface to monitor productivity and profitability simultaneously.

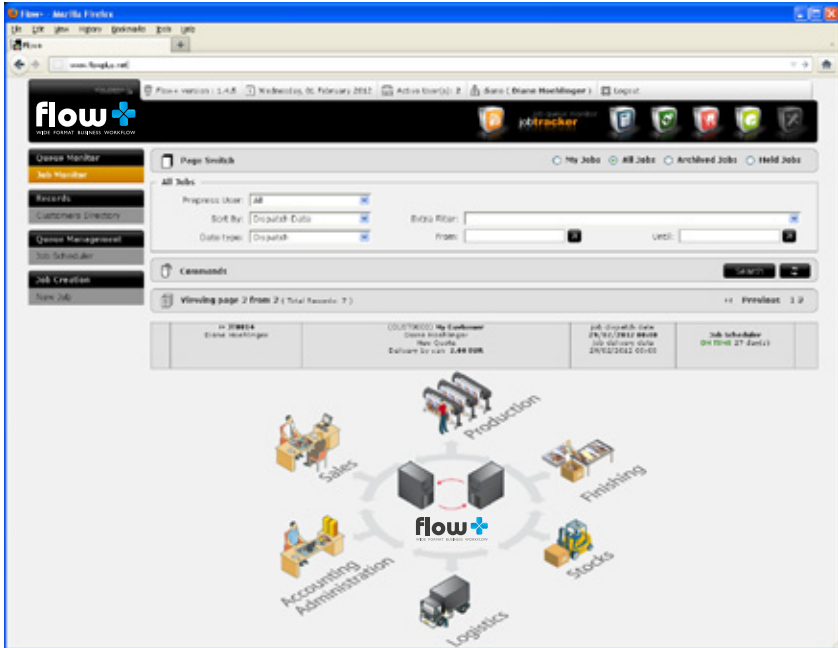
Whether you need to see a quick overview of your inventory, analyze your financial data or create a sales report, **Flow+** is an essential tool for the most efficient and productive wide-format print businesses. Easy to use and quick to set up, Caldera's market-leading workflow software is the wide-format print management solution your growing business can't do without.

WHAT IS FLOW + ?

SALES	ADMINISTRATION	PRE-PRESS	PRODUCTION	OUT-SOURCING
Quote management Job tracking	Purchase order management Material purchasing	File management	Job tracking RIP connectivity Stock Management	Tracking of your outsourced tasks

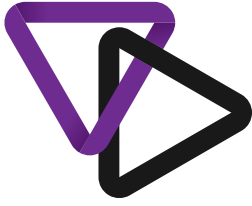
FLOW + 'S MAIN INTERFACE

ABSOLUTE CONTROL |



FLOW + BENEFITS

- + Reduction of the number of production errors : coherence between sales and production
- + Optimizes the workload of devices (print, cut) and other finishing
- + Improves amortization of machines
- + Increases reactivity in material purchasing
- + Optimizes the sales force's product knowledge
- + Improves reactivity and productivity
- + Reduces sales errors (product offering construction)
- + Improves sales performance (productivity, statistics...)
- + Easy access via web-browser
- + Improves negotiation with suppliers : better prices, margins, improved EBIT



variable display



FEATURES:

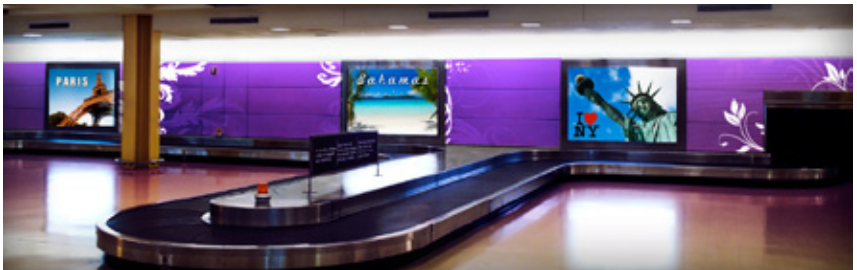
- + Simplified set-up
- + Easy mounting
- + Multiple format capability
- + One click content updating
- + Drag & drop playlist building
- + High-quality playback
- + Secured connectivity

Variable Display is a digital signage solution for wide-format print producers, which integrates with digital printing output seamlessly to create point-of-sale material, retail signage, event graphics and a range of other applications.

Caldera's new product is designed as an appliance with the capability to drive any type of monitor and video projectors. The **Variable Display** solution is practical, discreet, easy to carry, and can be hidden behind the monitor to which it is connected easily. Its user interface can be driven from any type of platform (Windows, Mac and Linux) as well as from iPhone™, iPad™ and Android™.

Variable Display supports a wide variety of digital formats, including audio, video, flash animations, pictures and PDF documents. It can also be connected to the internet and harness live content streams such as websites, web radio and television stations, with all content saved as video campaigns or playlists.

Content can be displayed on either one individual monitor or on several screens simultaneously, making it simple for users to manage and personalize the content of a fleet of monitors or video projectors.





INDUSTRIES:

- + Transportation / Transit
- + Retail
- + Banking/Finance
- + Food/Restaurant
- + Healthcare : Pharmacies, Dentists
- + Hospitality : Hotels, Bed & Breakfast
- + Outdoor Communications

APPLICATIONS:

- + Corporate communications
- + Entertainment
- + Advertising
- + General information networks
- + Retail TV/Employee TV
- + Electronic billboards/Digital posters
- + Education



MAINTENANCE



GAIN IN PRODUCTIVITY AND SERENITY WITH CALDERA'S MAINTENANCE POLICY

Caldera's maintenance package delivers the indispensable support for the daily use of your RIP software, helping to optimize your printer and cut device productivity.

To better serve print producers, Caldera offers a full package of services:

- + Unlimited access to telephone support during the contract period
- + Email assistance and follow-up
- + Direct access to the Caldera support team
- + Remote maintenance (control of your computer from a distance via internet)
- + Sign-up to Caldera's Technical newsletter
- + Access to software version updates within a version number (ie. V9 to 9.1)
Upgrades from one version number to another are not covered (ie. V9 to V10)

HARDWARE PC



CALDERA OFFERS CLIENTS THE POSSIBILITY TO ACQUIRE THE HIGH-END DELL PC'S WITH LINUX AND THE RIP SOFTWARE PRE-INSTALLED.

As a certified DELL OEM partner, this guarantees a plug-&-print solution, making print production easier with no extended times installing the software.

Caldera has chosen Dell as a hardware partner, which gives users a turn-key solution and sees Caldera's products benefit from greater accessibility and reliability thanks to Dell's renowned manufacturing quality.

Businesses that use Caldera's solutions are looking for world wide support plus the best possible ratio of quality to productivity, and this out-of-the-box solution fulfills that requirement precisely.

REFERENCES

IMAGING & PRINT SERVICE PROVIDERS

/ **FRANCE** COREP, COPY-TOP, DECAPUB, MULTIPLAST, TOP COLOR, LE COMPTOIR DE L'IMAGE, DODEKA, SÉRIGRAPHIE MODERNE, ATC CARACTERES, PICTO, ALL PRINT / **USA** FASTSIGNS, ARC AMERICAN REPROGRAPHICS, NATIONAL PRINT GROUP, 4OVER, SUPERCOLOR, IMAGICI, LITHOGRAPHIX, FERRARI COLOR, FUSION IMAGING, VISIBLE MARKETING, PORTLANDCOLOR, PHOTOCRAFT, DUGGAL, KING DISPLAYS, LOWEN CORPORATION, INKJET INTERNATIONAL, NEW ERA PUBLISHING, IMAGE CRAFT, KRAMER GRAPHICS, ICL IMAGING, QUALITY BANNER, GRAPHIC SYSTEMS, THE BERNARD GROUP, LAMAR, COLORIMAGE / **CANADA** BEYOND DIGITAL IMAGING, TRANSCONTINENTAL PLM / **SPAIN** CIANOPLAN, MAGNAPRINT, OEDIM, BOBET SOPORTES PUBLICITARIOS CANARIAS, MEDIUS KOLORO / **SWEDEN** ARKITEKTKOPIA, GIGANTPRINT / **NORWAY** ALLKOPI, MARKBRIC, FOTOPHONO / **UK** SERVICE POINT, BAF, DELTADISPLAY, DOMINION, SERVICE GRAPHICS, MC KENZIE CLARK, JKN DIGITAL / **RUSSIA** KIBO, MIDIPRINT / **GREECE** POLICHROMO / **ROUMANIA** TIPART GROUP / **ITALY** TIC TAC SERVICES, STUDIO PIXART, WALBER, 31 DIGITAL STREET / **GERMANY** FLYERALARM, DIEDRUCKEREI, ALPRINTA, GRIEGER, OSCHATZ VISUELLE MEDIEN, BESSERXXL, L-ARTS FEINE WERBUNG, H&D DIGITALDRUCK, DCP, PROCEDES CHENEL, WILBRI, VIABILD, NIGGEMEYER, BIG IMAGE SYSTEMS, DRUCKZENTRUM MITTEL RHEIN, KATZER PRINTVISION / **DANEMARK** IMAGE CREATOR, PRINTFACTORY / **BELGIUM** IMPRESSION BELGIQUE, CREASET, MAGRAF, SUPERCOLOR, BIORACER / **SWITZERLAND** MATHYS, GOBET PRODUCTIONS, PRINTONE, BEDRUCKBAR, MAKRO ART / **UEA** REPROTRONICS / **SLOVAKIA** DOUBLE P / **SOUTH AFRICA** COLOR SCREEN / **AUSTRIA** ARIAN, DIGITALDRUCK.AT, TREVISION / **NETHERLAND** VAN STRAATEN, PROBO SIGN, CREATIVE COLORS, BERGSLLOT / **POLAND** VOIGT PROMOTION, MASTERPRINT XL, EMERALD, STUDIO55

And many more...

INDUSTRIES

EDUCATION & RESEARCH, ENERGY & OIL, AUTOMOTIVE, CHEMICAL & PHARMACY, ADMINISTRATIONS, DEFENSE, RETAIL...

/ **FRANCE** ÉCOLE ET OBSERVATOIRE DE PHYSIQUE DU GLOBE DE STRASBOURG, PSA PEUGEOT CITROËN, RENAULT, ITALDESIGN , TOTAL, GAZ DE STRASBOURG, INSTITUT FRANCAIS DU PÉTROLE, YVES ROCHER, MÉTÉO-FRANCE, VILLE DE LYON, ARMÉE DE TERRE / **USA** NASA, PHILIPS PETROLEUM, HALLIBURTON, CATERPILLAR, US ARMY RESEARCH LABORATORY, BEST BUY, SANOFI SYNTHELABO, UPSA, BAXTER HEMOGLOBIN THERAPEUTICS, JOHNS HOPKINS UNIVERSITY / **UK** SOUTHAMPTON OCEANOGRAPHY CENTER / **MEXICO** PEMEX / **NORWAY** HYDRO, STATOIL / **ALGERIA** SONATRACH / **SWEDEN** VOLVO / **GERMANY** DAIMLER-CHRYSLER / **ITALY** PIAGGIO / **EGYPT** MINISTRY OF WATER RESSOURCES / **RUSSIA** EMERCOM / **IRELAND** DUBLIN AIRPORT AUTHORITY

SUPPORTED MANUFACTURERS

OEM Partners:



Partners:



Complete supported devices list: www.caldera.com

CALDERA



JOIN US NOW

FREE CALDERA EVALUATION VERSIONS ARE AVAILABLE ON OUR WEBSITE :

Demonet : <http://demonet.caldera.com>

A DEDICATED SECTION WITH RESOURCES FOR CALDERA USERS IS ONLINE :

Usernet : <http://usernet.caldera.com>

SYSTEM REQUIREMENTS

PC :

LINUX OS : CALDERA DEBIAN 1.1

RAM : MINIMUM 2GB, RECOMMENDED 4 GB

PROCESSOR : SINGLE OR DUAL CORE 2GHZ

HDD : 250GB

MONITOR / VIDEOCARD : 1280x1024 RESOLUTION

MAC :

OSX : 10.5, 10.6, 10.7

RAM : MINIMUM 2GB, RECOMMENDED 4 GB

PROCESSOR : SINGLE OR DUAL CORE 2GHZ

HDD : 250GB

MONITOR / VIDEOCARD : 1280x1024 RESOLUTION

VIEW UPDATED OR LATEST REQUIREMENTS ONLINE: WWW.CALDERA.COM

DISTRIBUTED BY

CALDERA - 1 rue des Frères Lumière - P.A. d'Eckbolsheim - BP 78002 - 67038 Strasbourg Cedex 2 - France

www.caldera.com - Tel. +33 388 210 000 - Fax +33 388 756 242 - contact@caldera.com

Copyright 2012 Caldera. All rights reserved. All trademarks, logos and brand names mentioned in this publication are property of their respective owners. All images and photographs here featured are the copyright of their respective owners. Several images are copyright of istockphoto.com